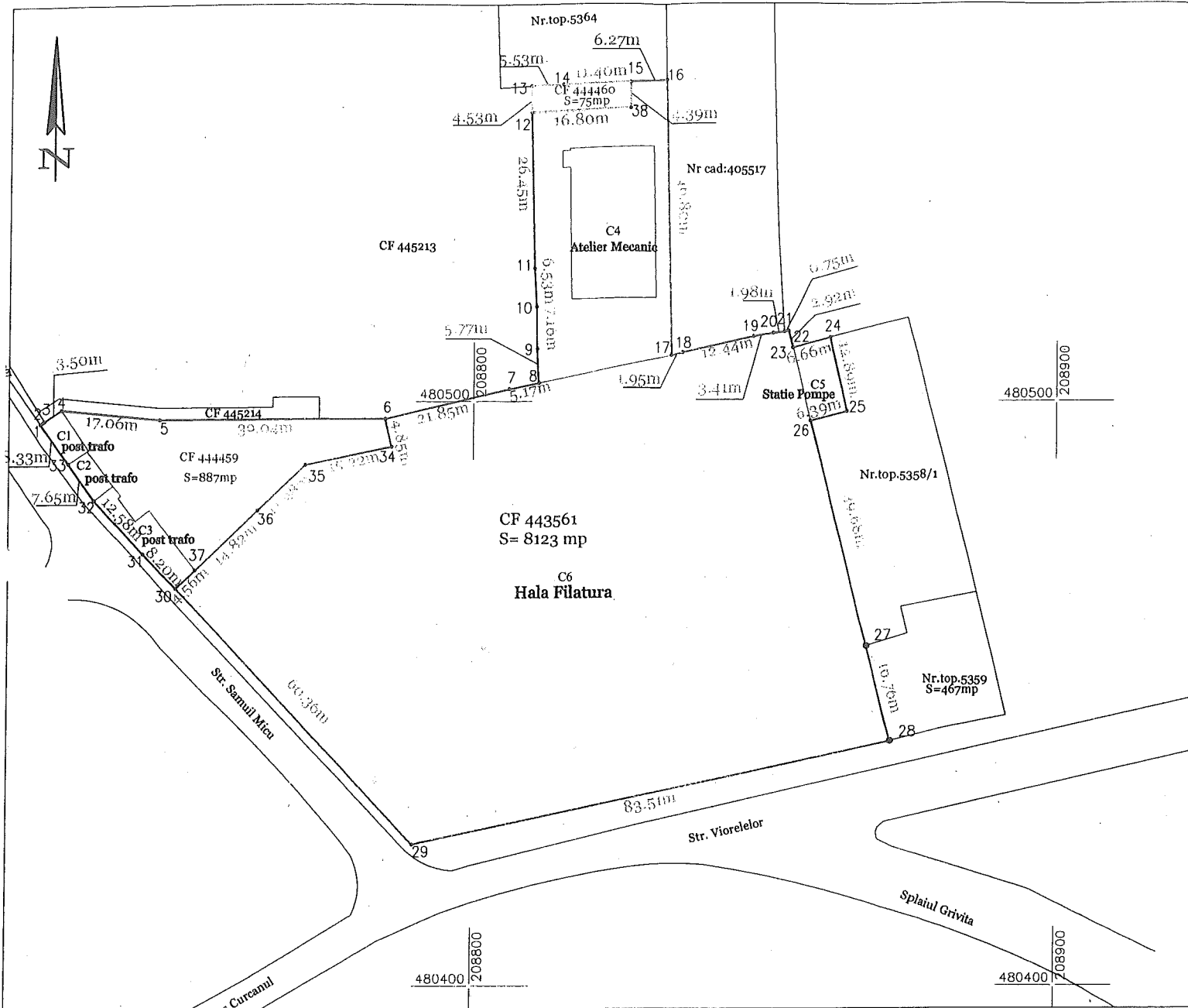
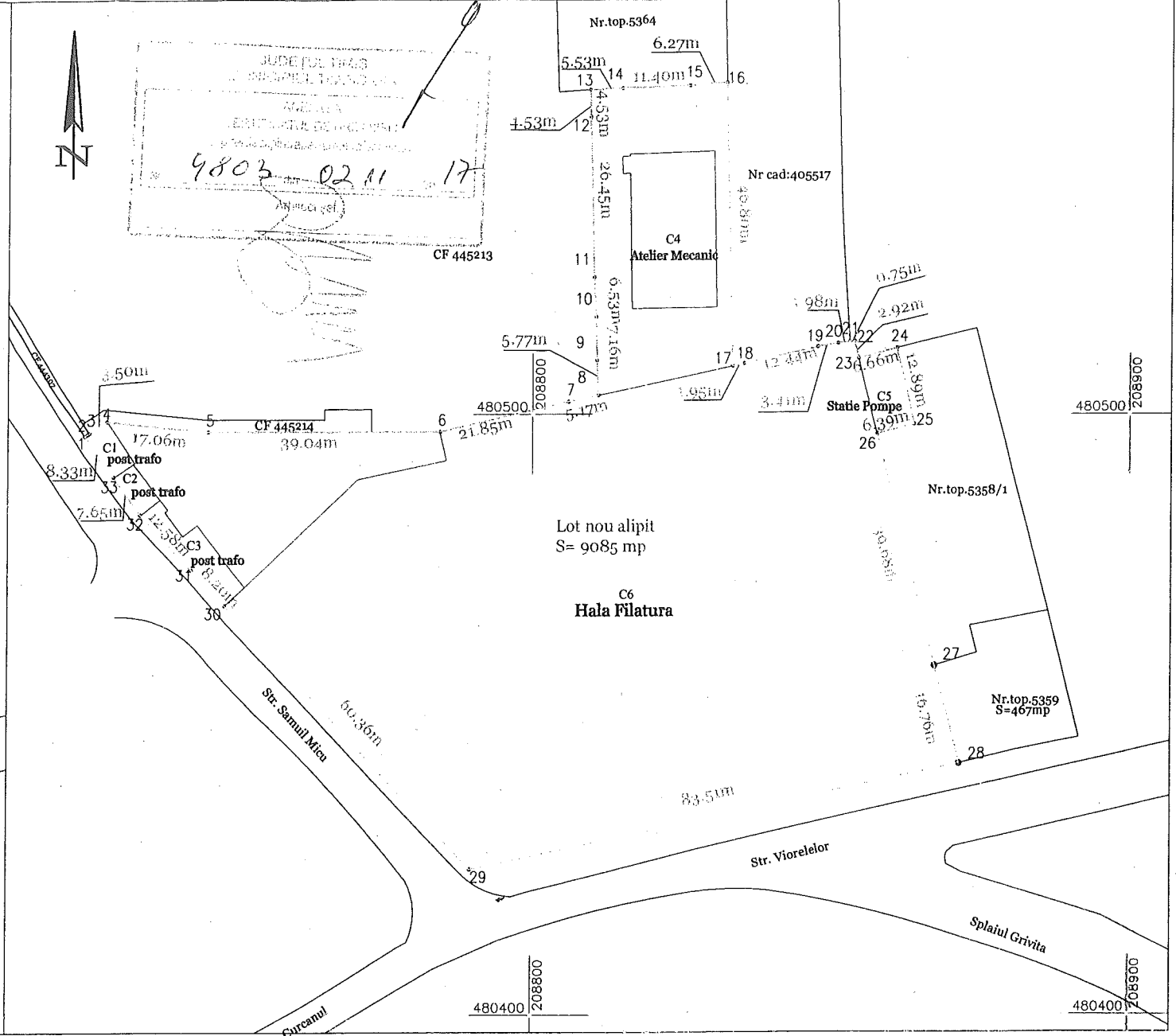


Plan de situatie inainte de alipire scara 1:1000



Plan de situatie dupa alipire scara 1:1000



Lot nou alipit

Nr. Pct.	Coordonate pct.de contur		Lungimi laturi D(i,i+1)
	X [m]	Y [m]	
1	480496.412	208725.093	0.530
2	480496.719	208725.525	0.322
3	480496.893	208725.796	3.496
4	480498.782	208728.738	17.056
5	480497.097	208745.711	39.043
6	480497.019	208784.754	21.852
7	480502.022	208806.026	5.166
8	480503.076	208811.083	5.767
9	480508.835	208810.788	7.162
10	480515.995	208810.636	6.530
11	480522.514	208810.250	26.447
12	480548.952	208809.543	4.526
13	480553.476	208809.423	5.528
14	480553.699	208814.947	11.401
15	480554.110	208826.341	6.265
16	480554.577	208832.589	46.802
17	480507.788	208833.705	1.945
18	480508.213	208835.603	12.439
19	480510.927	208847.742	3.407
20	480511.514	208851.098	1.977
21	480511.760	208853.060	0.749
22	480511.855	208853.803	2.919
23	480509.025	208854.519	6.655
24	480510.735	208860.951	12.890
25	480498.176	208863.853	6.386
26	480496.586	208857.668	39.680
27	480458.119	208867.406	16.764
28	480441.868	208871.521	83.508
29	480424.228	208789.897	60.363
30	480468.256	208748.603	8.203
31	480474.173	208742.921	12.581
32	480483.374	208734.340	7.651
33	480489.614	208729.912	8.333

S=9085mp P=494.347m

CF 444459

Nr. Pct.	Coordonate pct.de contur		Lungimi laturi D(i,i+1)
	X [m]	Y [m]	
30	480468.256	208748.603	4.557
37	480471.378	208751.923	14.816
36	480481.549	208762.695	11.280
35	480489.242	208770.945	15.224
34	480492.295	208785.860	4.852
6	480497.019	208784.754	39.043
5	480497.097	208745.711	17.056
4	480498.782	208728.738	3.496
3	480496.893	208725.796	0.322
2	480496.719	208725.525	0.530
1	480496.412	208725.093	8.333
33	480489.614	208729.912	7.651
32	480483.374	208734.340	12.581
31	480474.173	208742.921	8.203

S=887mp P=147.946m

CF 443561

Nr. Pct.	Coordonate pct.de contur		Lungimi laturi D(i,i+1)
	X [m]	Y [m]	
15	480554.110	208826.341	6.265
16	480554.577	208832.589	46.802
17	480507.788	208833.705	1.945
18	480508.213	208835.603	12.439
19	480510.927	208847.742	3.407
20	480511.514	208851.098	1.977
21	480511.760	208853.060	0.749
22	480511.855	208853.803	2.919
23	480509.025	208854.519	6.655
24	480510.735	208860.951	12.890
25	480498.176	208863.853	6.386
26	480496.586	208857.668	39.680
27	480458.119	208867.406	16.764
28	480441.868	208871.521	83.508
29	480424.228	208789.897	60.363
30	480468.256	208748.603	4.557
37	480471.378	208751.923	14.816
36	480481.549	208762.695	11.280
35	480489.242	208770.945	15.233
34	480492.298	208785.868	4.863
6	480497.029	208784.742	21.862
7	480502.022	208806.026	5.166
8	480503.076	208811.083	5.767
9	480508.835	208810.788	7.162
10	480515.995	208810.636	6.530
11	480522.514	208810.250	26.447
12	480548.952	208809.543	16.802
13	480549.719	208809.423	11.402

S=8123mp P=447.625m

CF 444460

Nr. Pct.	Coordonate pct.de contur		Lungimi laturi D(i,i+1)
	X [m]	Y [m]	
15	480554.110	208826.342	4.391
38	480549.719	208826.328	16.802
12	480548.952	208809.544	4.526
13	480553.476	208809.423	5.528
14	480553.699	208814.947	11.402

S=75mp P=42.649m

SITUATIA ACTUALA (inainte de alipire)				SITUATIA VIITOARE (dupa alipire)			
Nr. cad.	Supraf. mp	Categoria de folosinta	Descrierea imobilului	Nr. cad.	Supraf. mp	Categoria de folosinta	Descrierea imobilului
444459	887	Cc	Teren intravilan cu C1-post trafo, C2 - post trafo si C3 - post trafo	Lot nou alipit	9085	Cc	Teren intravilan cu C1-post trafo, C2 - post trafo, C3 - post trafo, C4 - Atelier mecanic, C5 - Statie pompe si C6 - Hala filatura
443561	8123	Cc	Teren intravilan cu C1 - Atelier mecanic, C2 - Statie pompe, C3 - Hala filatura				
444460	75	Cc	Teren intravilan				
<b>Total</b>	<b>9085</b>				<b>9085</b>		

**sc MULTILINES srl**  
 certificat de autorizare seria RO-B-J nr.66  
 Str. Sf.Apostoli Petru si Pavel, nr. 36  
 Timisoara  
 tel: 0731930560 0731930561  
 info@multilines.ro

Set proiect: ing. Feraru Florian  
 Intocmit: ing. Feraru Florian  
 Desenat: ing. Albu Corneliu  
 Verificat: [Signature]

Denumire proiect: Documentatie tehnica pentru obtinerea C.U. pentru alipirea imobilului inregistrat in CF 444459, 444460, 443561, loc. Timisoara, jud. Timis.

Beneficiar: SC UTT TIMISOARA SA

Scara: 1:1000  
 1:1000

Plansa: Plan de situatie inainte de alipire  
 Plan de situatie dupa alipire

Data: 10.2017

Proiect nr. 326/2017